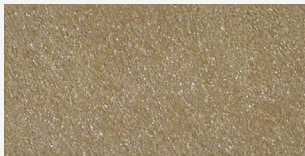




Dune Opaco

MATT METALLIC EFFECT

novacolor™
I colori dell'Architettura



DSO 18201



DSO 18217



DSO 18212



DSO 18205



DSO 18209



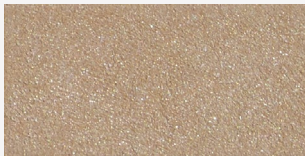
DSO 18216



DSO 18210



DSO 18200



DSO 18206



DSO 18241



DSO 18222

IT. Rivestimento decorativo per interni ad effetto metallizzato opaco

Applicare DUNE OPACO in due strati con rullo di pelo corto o spatola inox. Ripassare l'ultimo strato ancora umido con spatola inox o in plastica, per ottenere una soffice damascatura.

Diluizione: 20% con acqua. Resa: 8-10 m²/l in due strati.

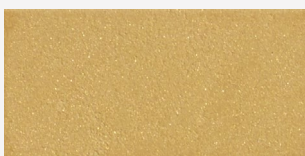
Per maggiori informazioni consultare la scheda tecnica.

EN. Decorative architectural trowel-on coating with matt metallic patterns

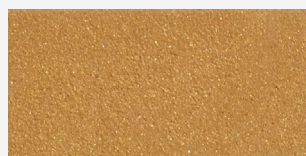
Apply DUNE OPACO in two layers with a short hair mohair roller or stainless steel trowel. Compress the second layer while wet with stainless steel or plastic trowel.

Dilution: 20% with water. Yield: 8-10 m²/l in two layers.

For more information please check the technical data sheet.



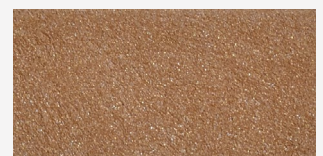
DUNE OPACO GOLD



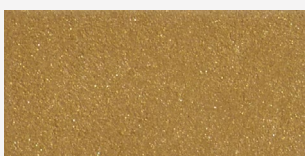
DGO 18242



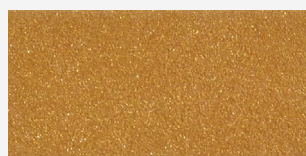
DGO 18234



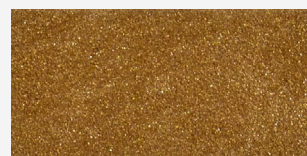
DSO 18207



DGO 18236



DGO 18243



DGO 18245



DGO 18246

FR. Revêtement décoratif pour intérieurs à effet métallisé mat

Appliquer DUNE OPACO en deux couches avec rouleau de poil court ou truelle inox. Travailler la dernière couche encore humide avec truelle inox ou en plastique, pour obtenir un souple effet damasqué.

Dilution: 20% avec eau. Rendement: 8-10 m²/l en deux couches.

Pour plus d'informations contrôler la fiche technique.

DE. Dekorative Innenwandbeschichtung für eine matte Optik

Zwei Schichten DUNE OPACO mit einer Rolle oder einem Edelstahlspachtel auftragen. Die zweite Schicht mit Edelstahlspachtel über die noch feuchte Oberfläche streichen, und diese so bearbeiten, daß ein weicher Damask-Effekt erhalten wird.

Verdünnung: 20% mit Wasser. Ergiebigkeit: 8-10 m²/l in zwei Schichten.

Für weitere Info bitte siehe technisches Merkblatt.

ES. Revestimiento decorativo para interiores con efecto metalizado opaco

Aplicar DUNE OPACO en dos capas con rodillo de pelo corto o espátula inox. Repasar la última capa aún húmeda con una espátula inox o de plástico, para obtener un suave adamascado.

Dilución: 20% con agua. Rendimiento: 8-10 m²/l en dos capas.

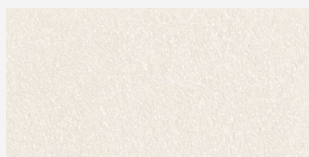
Para mayor información consultar la ficha técnica.



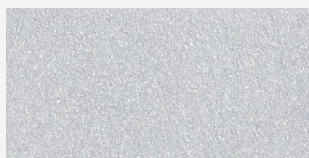
DGO 18244



DSO 18202



DUNE OPACO SILVER



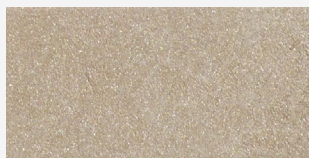
DSO 18276



DSO 18275



DSO 18277



DSO 18278





DSO 18275 + DSO 18276 + DUNE OPACO SILVER



DSO 18220



DSO 18248



DSO 18249



DSO 18215



DSO 18221



DSO 18214



DSO 18250



DSO 18253



DSO 18247



DSO 18218



DSO 18251

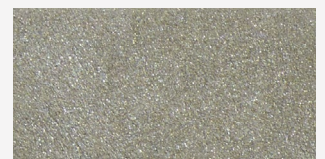


DSO 18254



DSO 18200 + DSO 18218 + DSO 18241

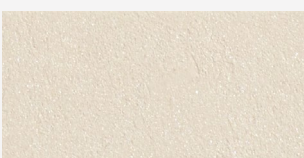
Dune Opaco



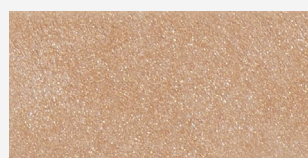
DSO 18237



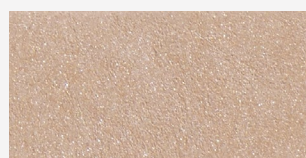
DSO 18238



DSO 18204



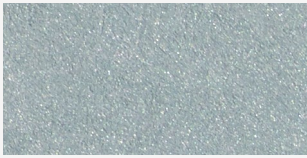
DSO 18203



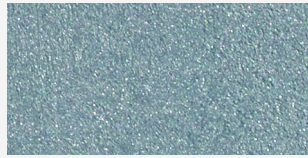
DSO 18252



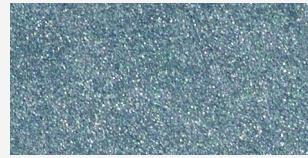
DSO 18208



DSO 18255



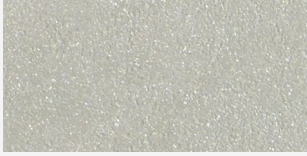
DSO 18232



DSO 18228



DSO 18224



DSO 18219



DSO 18260



DSO 18229



DSO 18225



DSO 18256



DSO 18261



DSO 18267



DSO 18271



DSO 18257



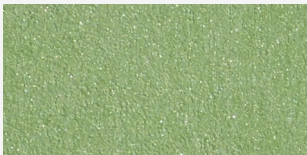
DSO 18262



DSO 18268



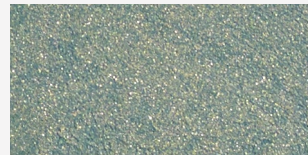
DSO 18272



DSO 18258



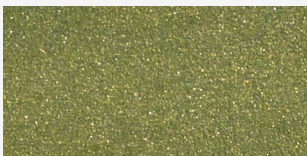
DGO 18263



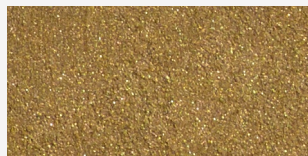
DGO 18269



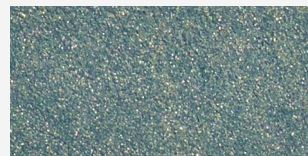
DSO 18226



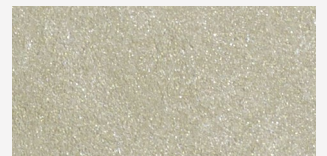
DGO 18231



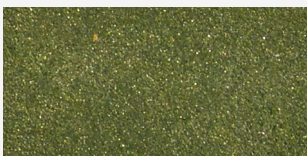
DGO 18264



DGO 18270



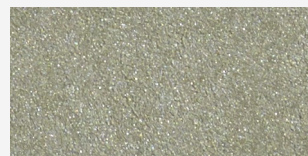
DSO 18233



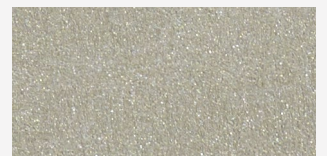
DGO 14227



DGO 18265



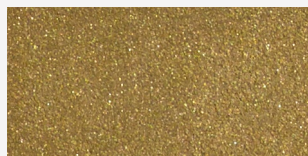
DSO 18239



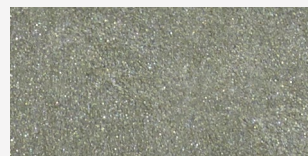
DSO 18273



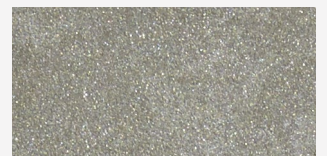
DGO 18259



DGO 18266



DSO 18230



DSO 18274

Dune Opaco

Dune Opaco rappresenta l'espressione dell'attuale impegno di Novacolor verso la sostenibilità ambientale. Al fine di ridurre il "carbon footprint", Dune Opaco è formulato con un legante speciale, derivante da biomassa sostenibile, che sostituisce quindi materie prime fossili.

Questo è stato possibile grazie ad una metodologia tecnico-produttiva chiamata "mass balance" certificata REDcert².

Dune Opaco represents the expression of Novacolor commitment to the environmental sustainability. To reduce the "carbon footprint", Dune Opaco is formulated with a special binder, made from sustainable biomass, that replaces the fossil raw materials. This is possible thanks to a technical-productive system called "mass balance approach" certified REDcert².





Novacolor Suomi
 I colori dell'Architettura
 www.novacolor.fi - info@novacolor.fi
 +358 45 345 2345

DUNE OPACO



Certificato A+ per le basse emissioni di sostanze volatili nell'aria.
A+ Certified for the low emissions of volatile substances in the air.



Riduce il carbon footprint. Certificato REDcert².
Reduction of the carbon footprint. REDcert² Certified.




Formulato con biomassa sostenibile grazie al sistema produttivo Mass Balance Approach.
Made from sustainable biomass thanks to the Mass Balance Approach productive system.

Le tonalità di questa cartella hanno valore puramente indicativo. The color samples in this color chart should be considered purely indicative.

novacolorTM
I colori dell'Architettura

NOVACOLOR Srl
Via Ulisse Aldrovandi 10 - 47122 Forlì (FC) Italy
Tel +39 0543 401840 - Fax +39 0543 414585
info@novacolor.it

 Novacolor is committed to reduce the environmental impact by producing friendly materials.



AZIENDA CON
SISTEMA DI GESTIONE
CERTIFICATO DA DNV GL
= ISO 9001 =
= ISO 14001 =

COMPANY WITH
MANAGEMENT SYSTEM
CERTIFIED BY DNV GL
= ISO 9001 =
= ISO 14001 =



Made in Italy